



Technical Equipment Distributors, Inc (TEDI)

Base Station Antennas – 700, 800 & 900 MHz

700, 800, & 900 MHz Base Station Antennas

Omni Directional

Item#	Description	Max Power	Gain (dBi)	Vertical Beam @ 1/2 Power	Frequency Range	Mounting Hardware	Conn. Type	List Price	Reseller Price
Cushcraft Fiberglass Omni - Best Suited for Base Station and Talk Around Applications * Highly Reliable Plated Copper Laminate Radiator Material <i>50 Ohm Impedance / DC Grounded / Wind Survival: 125 MPH / Fiberglass Radome</i>									
S8060B	806-866 MHz, Fiberglass Omni 2 dBi, 0 dBd, *	150	2	75	806-866	Not Incl	N(F)	58.80	Call
S8063B	806-866 MHz, Fiberglass Omni 5 dBi, 3 dBd, *	150	5	45	806-866	Not Incl	N(F)	120.00	Call
S8064B	806-866 MHz, Fiberglass Omni 6 dBi, 4 dBd, *	150	6	25	806-866	Not Incl	N(F)	160.00	Call
S8240B	824-896 MHz, Fiberglass Omni 2 dBi, 0 dBd, *	150	2	75	824-896	Not Incl	N(F)	58.80	Call
S8243B	824-896 MHz, Fiberglass Omni 5 dBi, 3 dBd, *	150	5	45	824-896	Not Incl	N(F)	120.00	Call
S8243BDF	824-896 MHz, Fiberglass Omni 5 dBi, 3 dBd,	150	5	45	824-896	Not Incl	N(F)	219.61	Call
S8800B	880-960 MHz, Fiberglass Omni 2 dBi, 0 dBd, *	150	2	75	880-960	Not Incl	N(F)	58.80	Call
S8803B	880-960 MHz, Fiberglass Omni 5 dBi, 3 dBd, *	150	5	45	880-960	Not Incl	N(F)	120.00	Call
S8804B	880-960 MHz, Fiberglass Omni 6 dBi, 4 dBd, *	150	6	25	880-960	Not Incl	N(F)	160.00	Call
S8960B	896-960 MHz, Fiberglass Omni 2 dBi, 0 dBd, *	150	2	75	880-960	Not Incl	N(F)	58.80	Call
S8963B	896-960 MHz, Fiberglass Omni 5 dBi, 3 dBd, *	150	5	45	880-960	Not Incl	N(F)	120.00	Call
S8964B	896-960 MHz, Fiberglass Omni 6 dBi, 4 dBd, *	150	6	25	880-960	Not Incl	N(F)	160.00	Call



S80243

Pacific Wireless OD & Flag Antennas Series - Radome Made from UV Stabilized Fiberglass* Horizontally Polarized version is Extruded Alum. With Powder Coat <i>Used for Non-LOS Apps / Verticle & Horizontal Polarization Options / 50 Ohm Impedance / Wind Survival : 125 MPH</i>									
OD9-5	5dBi 860-960MHz SlimLine Omnidirectional --	100	5	36	900-928	Included	N(F)	59.95	Call
OD9-6	6dBi 860-960MHz Omnidirectional --	100	6	16	900-928	Included	N(F)PT	69.95	Call
OD9-8	8dBi 860-960MHz Omnidirectional --	100	8	10	900-928	Included	N(F)PT	110.95	Call
OD9-11	11dBi 860-960MHz Omnidirectional --	100	11	7	900-928	Included	N(F)	299.95	Call
OD9-11D1	11dBi 860-960MHz Omnidirectional 1deg elect downtilt--	100	11	7	900-928	Included	N(F)	319.95	Call
ODH9-9	9dBi 900MHz Hor. Polarized Omni	100	9	18	900-928	Included	N(F)	899.95	Call
FlagTenna900-35GM	11dBi 860-960MHz, 35' FlagTenna w/ Ground Mount Kit -	100	11	7	900-928	Included	N(F)	1460.00	Call
FlagTenna900-35WM	11dBi 860-960MHz, 35' FlagTenna w/ Wall Mount Kit -	100	11	7	900-928	Included	N(F)	1870.00	Call
FlagTenna900-35SM	11dBi 860-960MHz, 35' FlagTenna w/ Surface Mount Kit -	100	11	7	900-928	Included	N(F)	1870.00	Call
FlagTenna900-50GM	11dBi 860-960MHz, 50' FlagTenna w/ Ground Mount Kit -	100	11	7	900-928	Included	N(F)	3120.00	Call



ODH9

OD9-5

For a Picture of the FlagTenna - go to the last page of the 700, 800 & 900 Antennas Section

Antenex - FG Series - High Performance Collinear Design* High Density, UV Treated Fiberglass Gold Anodized Sleeve & Cap <i>100% Checked on Network Analyzer 125 MPH Wind Surv. / Radiator: Copper Clad Elements / Mounting Bracket not Included / 50 Ohm Impedance</i>									
FG7463	(Eng) 746-796 MHZ 3DB fiberglass antenna	100	3	33	746-796	Not Incl	N(F)	146.15	Call
FG7466	(Eng) 746-796 MHZ 6DB fiberglass antenna	100	6	17	746-796	Not Incl	N(F)	189.32	Call
FG7703	770-806 MHZ 3DB FIBERGLASS BS	100	3	33	770-806	Not Incl	N(F)	356.29	Call
FG8060	G-806-866 0dB GOLD FIBERGLASS BS	100	Unity	75	806-866	Not Incl	N(F)	97.78	Call
FG8063	G-806-866 3dB GOLD FIBERGLASS BS	100	3	33	806-866	Not Incl	N(F)	146.15	Call
FG8066	G-806-866 6dB GOLD FIBERGLASS BS	100	6	17	806-866	Not Incl	N(F)	191.90	Call
FG821/18503	Dual band 821-896/1850-1950MHz	100	0 / 3	75 / 33	821-896 / 1850-1950	Not Incl	N(F)	176.75	Call
FG8240	824-896 0dB GOLD FIBERGLASS BS	100	Unity	75	824-896	Not Incl	N(F)	97.78	Call
FG8243	824-896 3dB GOLD FIBERGLASS BS	100	3	33	824-896	Not Incl	N(F)	146.15	Call
FG8246	824-896 6dB GOLD FIBERGLASS BS	100	6	17	824-896	Not Incl	N(F)	191.90	Call
FG8510	851-896MHz 0dB GOLD FIBERGLASS BS	100	Unity	75	851-896	Not Incl	N(F)	97.78	Call
FG8513	851-896 3dB GOLD FIBERGLASS BS	100	3	33	851-896	Not Incl	N(F)	146.15	Call
FG8516	851-896 6dB GOLD FIBERGLASS BS	100	6	17	851-896	Not Incl	N(F)	191.90	Call
FGT880/21703	(ENG)Tribd fbrgls 3dB bs ant 880-960/1710-1880/1900-2170 Mhz	100	3/3/3		880-960 / 1710-1880 / 1900-2170	Not Incl	N(F)	195.00	Call
FG8690	869-902 0dB GOLD FIBERGLASS BS	100	Unity	75	869-902	Not Incl	N(F)	97.78	Call
FG8693	869-896 3dB GOLD FIBERGLASS BS	100	3	33	869-896	Not Incl	N(F)	146.15	Call
FG8696	869-896 6dB GOLD FIBERGLASS BS	100	6	17	869-896	Not Incl	N(F)	191.90	Call
FG8960	896-940 0dB GOLD FIBERGLASS BS	100	Unity	75	896-940	Not Incl	N(F)	97.78	Call
FG8963	896-940.00MHz GOLD FIBERGLASS BS	100	3	33	896-940	Not Incl	N(F)	146.15	Call
FG8966	896-940 6dB GOLD FIBERGLASS BS	100	6	17	896-940	Not Incl	N(F)	191.90	Call



FG8966

Length(max) Data:
Unity Gain: 15"
3 dB Gain: 25"
6 dB Gain: 65"



Technical Equipment Distributors, Inc (TEDI)

Base Station Antennas – 700, 800 & 900 MHz

Omni Directional (Continued)

Item#	Description	Max Power	Gain (dBi)	Vertical Beam @ 1/2 Power	Frequency Range	Mounting Hardware	Conn. Type	List Price	Reseller Price
Antenex - FG Series (Continued)									
FG9020	902-928 0dB GOLD FIBERGLASS BS	100	Unity	75	902-928	Not Incl	N(F)	97.78	Call
FG9023	G-902-928 3dB GOLD FIBERGLASS BS	100	3	33	902-928	Not Incl	N(F)	146.15	Call
FG9026	G-902-928 6dB GOLD FIBERGLASS BS	100	6	17	902-928	Not Incl	N(F)	191.90	Call
FG9280	928-932 0dB GOLD FIBERGLASS BS	100	Unity	75	928-936	Not Incl	N(F)	97.78	Call
FG9283	928-936 3dB GOLD FIBERGLASS BS	100	3	33	928-936	Not Incl	N(F)	146.15	Call
FG9286	928-970 6dB GOLD FIBERGLASS BS	100	6	17	928-971	Not Incl	N(F)	191.90	Call
FG9360	936-970 0dB GOLD FIBERGLASS BS	100	Unity	75	936-970	Not Incl	N(F)	97.78	Call
FG9363	936-970 3dB GOLD FIBERGLASS BS	100	3	33	936-970	Not Incl	N(F)	146.15	Call
FG9366	936-970 6dB GOLD FIBERGLASS BS	100	6	17	936-970	Not Incl	N(F)	191.90	Call

PCTEL/MaxRad MFB Series - "J" Pole Design needs no ground plane * Base Matched 1/2 Wave Design * White Ultra-Violet resistant Radome
 DC Grounded / 100 MPH Wind Survival / Thick Walled Aluminum Base (1-5/16") / 50 Ohm Impedance
 VSWR:1.5:1 / Mounting sold Separately / Radiator Material is Coated Steel Wire

ASPA2972	OMNI 3 dBi(5dBi)806-869MHZ	150	3	40	806-869	Not Incl	N(F)	107.50	Call
MFB8130	806-866,UNITY,FIBERGLASS BASE	150	Unity	75	806-866	Not Incl	N(F)	92.82	Call
MFB8133	806-866,3DB,FIBERGLASS BASE	150	3	40	806-866	Not Incl	N(F)	139.23	Call
MFB8135	806-866,5DB,FIBERGLASS BASE	150	5	22	806-866	Not Incl	N(M)PT	185.64	Call
MFB8135NF	806-866,5DB, FIBERGLASS,N FEM	150	5	22	806-866	Not Incl	N(F)	196.14	Call
MFB8137	806-866,7DB,FIBERGLASS BASE	150	7	17	806-866	Not Incl	N(M)PT	204.20	Call
MFB8137NF	806-866 MHZ, 7DB, FB OMNI ANTENNA	150	7	17	806-866	Not Incl	N(F)	214.70	Call
MFB8580	806-866,UNITY,FIBERGLASS BASE	150	Unity	75	806-866	Not Incl	N(F)	92.82	Call
MFB8583	806-866,3DB,FIBERGLASS BASE	150	3	40	806-866	Not Incl	N(F)	139.23	Call
MFB8585	806-866,5DB,FIBERGLASS BASE	150	5	22	806-866	Not Incl	N(M)PT	185.64	Call
MFB8585NF	806-866,5DB,FG,BASE,N FEMALE	150	5	22	806-866	Not Incl	N(F)	196.14	Call
MFB8587	806-866,7DB,FIBERGLASS BASE	150	7	17	806-866	Not Incl	N(M)PT	204.20	Call
MFB8587NF	806-866,7DB,FIBERGLASS BASE,NF	150	7	17	806-866	Not Incl	N(F)	214.70	Call
MFB8350	824-896,UNITY,FIBERGLASS BASE	150	Unity	75	824-896	Not Incl	N(F)	92.82	Call
MFB8353	824-896,3DB,FIBERGLASS BASE	150	3	40	824-896	Not Incl	N(F)	139.23	Call
MFB8355	824-896,5DB,FIBERGLASS BASE	150	5	22	824-896	Not Incl	N(M)PT	185.64	Call
MFB8355NF	824-896,5DB,FIBERGLASS,BASE	150	5	22	824-896	Not Incl	N(F)	196.14	Call
MFB8357	824-896,7DB,FIBERGLASS BASE	150	7	17	824-896	Not Incl	N(M)PT	204.20	Call
MFB8357NF	824-896, 7DB, FIBERGLASS BASE	150	7	17	824-896	Not Incl	N(F)	214.70	Call
MFB8820	824-896,UNITY,FIBERGLASS BASE	150	Unity	75	824-896	Not Incl	N(F)	92.82	Call
MFB8823	824-896,3DB,FIBERGLASS BASE	150	3	40	824-896	Not Incl	N(F)	139.23	Call
MFB8825	824-896,5DB,FIBERGLASS BASE	150	5	22	824-896	Not Incl	N(M)PT	185.64	Call
MFB8825NF	824-896, 5DB, FIBERGLASS BASE, NF	150	5	22	824-896	Not Incl	N(F)	196.14	Call
MFB8827	824-896,7DB,FIBERGLASS BASE	150	7	17	824-896	Not Incl	N(M)PT	204.20	Call
MFB9307	828-932,7DB,FIBERGLASS BASE	150	7	17	828-932	Not Incl	N(M)PT	204.20	Call
MFB8905	890-960 MHZ 5DB WIDEBAND OMNI	150	5	22	890-960	Not Incl	N(M)PT	185.64	Call
MFB8960	896-940,UNITY,FIBERGLASS BASE	150	Unity	75	896-940	Not Incl	N(F)	92.82	Call
MFB8963	896-940,3DB,FIBERGLASS BASE	150	3	40	896-940	Not Incl	N(F)	139.23	Call
MFB8965	896-940,5DB,FIBERGLASS BASE	150	5	22	896-940	Not Incl	N(M)PT	185.64	Call
MFB8965NF	896-940, 5DB, FIBERGLASS BASE	150	5	22	896-940	Not Incl	N(F)	185.64	Call
MFB8967	896-940,7DB,FIBERGLASS BASE	150	7	17	896-940	Not Incl	N(M)PT	204.20	Call
MFB8967NF	896-940,7DB,FIBERGLASS BASE,NF	150	7	17	896-940	Not Incl	N(F)	214.70	Call
MFB9157/8RPC	896-940,7DB,8'RG58/U,RP TNC	150	7	17	896-940	Not Incl	RPTNC(M)	220.50	Call
MFB9157RPC	896-940,7DB,FB10'RG58/U,RP TNC	150	7	17	896-940	Not Incl	RPTNC(M)	221.17	Call
MFB9380	896-940,UNITY,FIBERGLASS BASE	150	Unity	75	896-940	Not Incl	N(F)	92.82	Call
MFB9383	896-940,3DB,FIBERGLASS BASE	150	3	40	896-940	Not Incl	N(F)	139.23	Call
MFB9383C	896-940,3DB,FIBERGLASS BASE,TN	150	3	40	896-940	Not Incl	TNC(F)	139.23	Call
MFB9385	896-940,5DB,FIBERGLASS BASE	150	5	22	896-940	Not Incl	N(M)PT	185.64	Call
MFB9385NF	896-940, 5DB, FIBERGLASS BASE	150	5	17	896-940	Not Incl	N(F)	196.14	Call
MFB9387	896-940,7DB,FIBERGLASS BASE	150	7	17	896-940	Not Incl	N(M)PT	204.20	Call
MFB9387NF	896-940, 7DBI, FIBERGLASS BASE	150	7	17	896-940	Not Incl	N(F)	204.20	Call
MFBW8905	890-960 MHZ WIDEBAND OMNI NM	150	5	22	896-940	Not Incl	N(M)PT	176.80	Call



MFB-N(M)PT
 Length(max) Data
 Unity Gain: 15"
 3 dB Gain:26"
 5 dB Gain:48"
 7 dB Gain:96"



Technical Equipment Distributors, Inc (TEDI)

Base Station Antennas – 700, 800 & 900 MHz

Omni Directional (Continued)

Item#	Description	Max Powr	Gain (dBi)	Vertical Beam @ 1/2 Power	Freq. Range	Mounting Hardware	Conn. Type	List Price	Resell Price
PCTEL/MaxRad MFB Series - (Continued)									
MFB9150	902-928,UNITY,FIBERGLASS BASE	150	Unity		902-928	Not Incl	N(F)	92.82	Call
MFB9153	902-928,3DB,FIBERGLASS BASE	150	3	40	902-928	Not Incl	N(F)	139.23	Call
MFB9153BN	902-928,3DB,FIBERGLASS BASE	150	3	40	902-928	Not Incl	BNC(M)PT	139.23	Call
MFB9153C	902-928,3DB,3'RG58/U,TNC	150	3	40	902-928	Not Incl	TNC(M)PT	139.23	Call
MFB9153RPC	902-928,3DB,FB,3'RG58/U,RP TNC	150	3	40	902-928	Not Incl	RPTNC(M)	152.55	Call
MFB9153RPN	902-928 MHZ,3DB OMNI,3'RG58/U	150	3	40	902-928	Not Incl	RPN(M)PT	152.55	Call
MFB9153STRP C	902-928,3DB,3'YR29586,RP TNC	150	3	40	902-928	Not Incl	RPTNC(M)	152.55	Call
MFB9155	902-928,5DB,FIBERGLASS BASE	150	5	22	902-928	Not Incl	N(M)PT	185.64	Call
MFB9155/6RPC	902-928,5DB,6'RG58/U,RP TNC	150	5	22	902-928	Not Incl	RPTNC(M)	202.61	Call
MFB9155NF	902-928,5DB,FIBERGLASS,NF CONN	150	5	22	902-928	Not Incl	N(F)	196.14	Call
MFB9155RPC	902-928,5DB,FB,16'RG58/U,RP TNC	150	5	22	902-928	Not Incl	RPTNC(M)	202.61	Call
MFB9155RPN	902-928MHZ,5DB OMNI,3'RG58/U	150	5	22	902-928	Not Incl	RPN(M)PT	172.32	Call
MFB9157	902-928,7DB,FIBERGLASS BASE	150	7	17	902-928	Not Incl	N(M)PT	204.20	Call
MFB9157NF	902-928,7DB,FB,BASE,FEMALE N	150	7	17	902-928	Not Incl	N(F)	214.70	Call
MFB9157RPFMS MA	902-928 7 DB FIBERGLASS ANTENNA	150	7	17	902-928	Not Incl	RPSMA(F)	204.20	Call
MFB9300	928-932,UNITY,FIBERGLASS BASE	150	Unity	75	928-932	Not Incl	N(F)	92.82	Call
MFB9303	928-932,3DB,FIBERGLASS BASE	150	3	40	928-932	Not Incl	N(F)	139.23	Call
MFB9305	928-932,5DB,FIBERGLASS BASE	150	5	22	928-932	Not Incl	N(M)PT	185.64	Call



MFB w/ N(F)

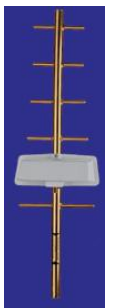
Yagi Antennas 700, 800 & 900 MHz

Item#	Description & F/B Ratio	Max Powr	Gain	Hor. & Vert. Beam @ 1/2 Power (°s)	Freq. Range	Mounting Hardware	Conn. Type	List Price	Resell Price
CushCraft PC Series - Welded Elements Eliminates Electrical Noise * No Adjustments or Tuning * Waterproof Design * 19" Pigtail * Stainless Steel Hardware									
<i>6061-T6 Elements (1/4") and Boom (3/4") / 50 Ohm Impedance / Wind Survival: 125MPH / DC Grounded / Max Mast Dia : 2 1/8"</i>									
PC804N	6 dBd, 4 el. broadband welded	200	6	100 / 70	806-902	Included	N(F)	38.15	Call
PC806N	8.5 dBd, 6 el. broadband welded	200	8.5	65 / 55	806-866	Included	N(F)	46.48	Call
PC8010N	11 dBd, 10 el. broadband welded	200	11	45 / 40	806-869	Included	N(F)	112.00	Call
PC826N	8.5 dBd, 6 el. broadband welded	200	8.5	65 / 55	821-896	Included	N(F)	46.48	Call
PC8210N	11 dBd, 10 el. broadband welded	200	11	45 / 40	824-896	Included	N(F)	112.00	Call
PC884N	6 dBd, 4 el. broadband welded	200	6	100 / 70	870-960	Included	N(F)	38.15	Call
PC886N	8.5 dBd, 6 el. broadband welded	200	8.5	65 / 55	870-960	Included	N(F)	46.48	Call
PC904N	6 dBd, 4 el. broadband welded	200	6	100 / 70	895-980	Included	N(F)	38.15	Call
PC906N	8.5 dBd, 6 el. broadband welded	200	8.5	65 / 55	896-940	Included	N(F)	46.48	Call
PC8910N	10 el. broadband welded	200	11	45 / 40	896-940	Included	N(F)	112.00	Call
PC9013N	13 dBd, 13 el. broadband welded	200	13	40 / 35	902-928	Included	N(F)	144.00	Call
PC926N	8.5 dBd, 6 el. broadband welded	200	8.5	65 / 55	928-960	Included	N(F)	46.48	Call
PC9010N	12 dBd, 10 el. broadband welded	200	12	45 / 40	928-960	Included	N(F)	112.00	Call



PC906N

Item#	Description	Max Powr	Gain	Hor. & Vert. Beam @ 1/2 Power (°s)	Freq. Range	Mounting Hardware	Conn. Type	List Price	Resell Price
Pctel / Maxrad MYG Series - 360 Deg. Welded Elements * Gold Anodized * Gold Plated Connector * ED Suffix Denoted Enclosed Driven Element Option									
<i>6061-T6 Aluminum Elements and Boom (Elements 3/8" & Boom 7/8") / 50 Ohm Impedance / Wind Survival: 100 MPH / DC Grounded</i>									
MYG8063	806-870,6.0DB,3 ELE YAGI,GOLD	150	6.4	72 / 57	806-870	MYK10	N(F)	162.07	Call
MYG8063ED	806-866,6DB,ENC DRY ELE,GOLD	150	6.4	72 / 57	806-866	MYK10	N(F)	196.02	Call
MYG8066	806-870,9.5DB,6 ELE YAGI,GOLD	150	9	42 / 40	806-870	MYK10	N(F)	167.58	Call
MYG8066ED	806-866,9DB,ENC DRY ELE,GOLD	150	9	42 / 40	806-866	MYK10	N(F)	236.25	Call
MYG8506	806-896,9DB,6 ELE YAGI,GOLD	150	9	42 / 40	806-896	MYK10	N(F)	167.58	Call
MYG8506ED	806-896,9DB,ENC DRI ELE,GOLD	150	9	42 / 40	806-896	MYK10	N(F)	236.25	Call
MYG8506FE	806-896, 9DB, ENCLOSED YAGI	150	9	42 / 40	806-896	MYK10	N(M)PT	388.74	Call
MYG9153ED	896-940 MHZ,3 ELEMENT,YAGI	150	6.4	72 / 57	896-940	MYK10	N(F)	196.02	Call
MYG9159	896-970, 915 MHZ, 9 ELE,YAGI	150	10	52 / 43	896-970	MYK10	N(F)	181.93	Call
MYG9159ED	896-970,915,9 ELEMENT YAGI	150	10	52 / 43	896-970	MYK10	N(F)	267.93	Call
MYG9159FE	896-970, 915,10DB,20DBF/B,YAGI	150	10	52 / 43	896-970	MYK10	N(M)PT	415.17	Call
MYG9159FENF	896-970,915,10DB,ENCL YAGI,NF	150	10	52 / 43	896-970	MYK10	N(F)PT	443.51	Call
MYG9303	896-940,6.0DB,3 ELE YAGI,GOLD	150	6.4	72 / 57	896-940	MYK10	N(F)	162.07	Call
MYG9303ED	896-970,6DB,ENC DRY ELE,GOLD	150	6.4	72 / 57	896-970	MYK10	N(F)	196.02	Call



MYG -6 Ele



Technical Equipment Distributors, Inc (TEDI)

Base Station Antennas – 700, 800 & 900 MHz

Item#	Description & F/B Ratio	Max Powr	Gain	Hor/ Vert Beam @		Freq. Range	Mounting Hardware	Conn. Type	List Price	Resell Price
				1/2	Power (°'s)					
Pctel / Maxrad MYG Series - (Continued)										
MYG9306	896-940,9DB,6 ELE YAGI,GOLD	150	9	42 / 40		896-940	MYK10	N(F)	167.58	Call
MYG9306ED	896-970,9DB,ENC DRI ELE,GOLD	150	9	42 / 40		896-970	MYK10	N(F)	236.25	Call
MYG9306FE	896-940, 9DB, ENCLOSED YAGI	150	9	42 / 40		896-940	MYK10	N(M)PT	388.74	Call
MYG9309	896-970,10DB,20DBF/B,YAGI	150	10	52 / 43		896-970	MYK10	N(F)	181.91	Call
MYG9309ED	896-940,10DB,9 ELEMENT YAGI	150	10	52 / 43		896-940	MYK10	N(F)	267.93	Call
MYG9309FE	896-970 MHZ,10DB,ENCL. YAGI	150	10	50 / 43		896-970	MYK10	N(M)PT	415.17	Call
MYG9309FENF	896-970 MHZ,10DB, ENCL,N FEMAL	150	10	50 / 43		896-970	MYK10	N(F)PT	443.51	Call



BMOY8905

Pctel / Maxrad BMOY Series - 360 Deg. Welded Elements * GOptimized using a Genetic Algorithm* Gold Plated Connector * Black Polyester Coating										
<i>6061-T6 Aluminum Elements and Boom (Elements 3/8" & Boom 7/8") / 50 Ohm Impedance / Wind Survival: 200 MPH / DC Grounded/ 1.9" Max Pipe Dia.</i>										
BMOY8063	OPT, YAGI, 806-869 MHZ, 3ELE, 6.4 DBD	150	6.4	100 / 54		806-869	MYK17	N(F)	152.25	Call
BMOY8065	OPT, YAGI, 806-866 MHZ, 5ELE, 9DBD	150	9	52 / 45		806-866	MYK17	N(F)	162.75	Call
BMOYW8063	OPTIMIZED YAGI, WIDEBAND 806-896	150	6.4	100 / 54		806-896	MYK17	N(F)	173.25	Call
BMOY8243	OPT, YAGI, 824-896 MHZ, 3ELE, 6.4 DBD	150	6.4	100 / 54		824-896	MYK17	N(F)	152.25	Call
BMOY8245	OPT, YAGI, 824-896MHZ, 5ELE, 9DBD	150	9	52 / 45		824-896	MYK17	N(F)	162.75	Call
BMOY8903	OPT, YAGI, 890-960 MHZ, 3ELE, 6.4 DBD	150	6.4	100 / 54		890-960	MYK17	N(F)	152.25	Call
BMOY8905	OPT, YAGI, 890-960 MHZ, 5ELE, 9DBD	150	9	52 / 45		890-960	MYK17	N(F)	162.75	Call

Antenex - Y Series - Gold Anodized*Light assembly Required * Internally Matched * Internal Feed Line Feeds Driven Element
No Gamma Match that can Detune / Elements: 6061-T6 3/8" Alum. Tubing / Boom: 7/8" Aluminum Tubing / 50 Ohm Impedance
100 MPH Wind Survival / DC Grounded / Elements welded

Y8063	G-Internal match Gold 806-896MHz 3 element	300	6	72 / 57		806-896	Included	N(F)	136.63	Call
YB8063	Internal match black Yagi 806-896MHz 3 element	300	6	72 / 57		806-896	Included	N(F)	265.84	Call
YB8066	G-Internal match black 806-896MHz 6 element	300	9	42 / 40		806-896	Included	N(F)	163.94	Call
Y8066	G-Internal match Gold 806-896MHz 6 element	300	9	42 / 40		806-896	Included	N(F)	163.94	Call
Y80612	G- Internal Match Gold Yagi 806-896MHz 12	300	11	36 / 34		806-896	Included	N(F)	218.61	Call
YB80612	806-896 BLK 11 DB 12 ELE YAGI	300	11	36 / 34		806-896	Included	N(F)	218.61	Call
Y80618	Gold anodized 806-896MHz fully welded 18 Ele	300	14	18 / 18		806-896	Included	N(F)	357.00	Call
YB80618	Black anodized 806-896MHz fully welded 18 Ele	300	14	18 / 18		806-896	Included	N(F)	357.00	Call
Y8963	G-Internal match Gold 896-970MHz 3 element	300	6	72 / 57		896-970	Included	N(F)	136.63	Call
YB8963	Internal match black Yagi 896-970MHz 3 element	300	6	72 / 57		896-970	Included	N(F)	136.63	Call
Y8966	G-Internal match Gold 896-970MHz 6 element	300	9	42 / 40		896-970	Included	N(F)	163.94	Call
YB8966	G-Internal match Black 896-970MHz 6 element	300	6	72 / 57		896-970	Included	N(F)	163.94	Call
Y89612	Internal Match Gold Yagi 896-970MHz 12 element	300	11	36 / 34		896-970	Included	N(F)	218.61	Call
YB89612	*non catalog item* 806-970 BLK 11 DB 12 ELE	300	11	36 / 34		806-970	Included	N(F)	218.61	Call
YB89618	Black anodized 896-970MHz fully welded 18 Ele	300	14	18 / 18		896-970	Included	N(F)	357.00	Call
Y89618	Gold anodized 896-970MHz fully welded 18 Ele	300	14	18 / 18		896-970	Included	N(F)	357.00	Call



3 Ele Y Series

Pacific Wireless - YA Series - LMR300 Pigtail * Welded Elements * Wide Band * All Stainless Steel
50 Ohm Impedance / Wind Survival: 125 MPH / DC Grounded / Great for Non-LOS Applications

YA9-9	9dBi 860-960MHz 5 Element Yagi --	100	9	53 / 44		860-960	Included	N(F)-PT	36.95	Call
YA9-11	11dBi 860-960MHz 8 Element Yagi --	100	11	50 / 42		860-960	Included	N(F)-PT	46.95	Call
YA9-13	13dBi 860-960MHz 15 Element Yagi --	100	13	30 / 28		860-960	Included	N(F)-PT	51.95	Call



Non-Welded, Economy Yagis

Pctel / Maxrad - MYA Series -Great Price to Performance Ratio * Rugged 6061-T6 * Through Boom Mounted Elements make for Reliable Service
6061-T6 Aluminum Elements and Boom (Elements 3/8" & Boom 7/8") / 50 Ohm Impedance / Wind Survival: 100 MPH / DC Grounded

MYA7106	710-746 MHZ, 9DB, 6ELEMENT YAGI	150	9	42 / 40		710-746	MYK1	N(F)	105.89	Call
MYA8063	806-870,6.0DB,3 ELEMENT YAGI	150	6	72 / 57		806-870	MYK1	N(F)	71.78	Call
MYA8066	806-870,9.5DB,6 ELEMENT YAGI	150	9	42 / 40		806-870	MYK1	N(F)	95.39	Call
MYA8066PTU	806-870,9DB,6 ELE,PL259	150	9	42 / 40		806-870	MYK1	PL259-PT	105.89	Call
BMYA8063	806-866,6DB,3 ELE YAGI,BLK	150	6	72 / 57		806-866	MYK1	N(F)	86.03	Call
BMYA8066	806-866,9.5DB,6 ELE YAGI,BLK	150	9	42 / 40		806-866	MYK1	N(F)	113.12	Call
MYA8503	806-866,6DB,3 ELEMENT YAGI,CHR	150	6	72 / 57		806-866	MYK1	N(F)	71.78	Call
BMYA8253	824-896,6DB,3 ELE YAGI,BLK	150	6	72 / 57		824-896	MYK1	N(F)	86.03	Call
BMYA8256	824-896,9.5DB,6 ELE YAGI,BLK	150	9	42 / 40		824-896	MYK1	N(F)	113.12	Call
MYA8506	806-866,9DB,6 ELEMENT YAGI	150	9	42 / 40		806-866	MYK1	N(F)	95.39	Call
MYA80612	806-870,11DB,12 ELEMENT YAGI	150	11	36 / 34		806-870	MYK1	N(F)	151.41	Call
MYA85012	806-866,11DB,12ELEMENT YAG,CHR	150	11	36 / 34		806-866	MYK1	N(F)	151.41	Call





Technical Equipment Distributors, Inc (TEDI)

Base Station Antennas – 700, 800 & 900 MHz

Yagi Antennas 700, 800 & 900 MHz (Continued)

Item#	Description & F/B Ratio	Max Powr	Gain	Hor/ Vert. Beam @ 1/2 Power (°s)	Freq. Range	Mounting Hardware	Conn. Type	List Price	Resell Price
Pctel / Maxrad - MYA Series - (Continued)									
MYA8253	825-896,6DB,3 ELEMENT YAGI	150	6	72 / 57	825-986	MYK1	N(F)	71.78	Call
MYA8256	825-896,9DB,6 ELEMENT YAGI	150	9	42 / 40	825-986	MYK1	N(F)	95.39	Call
MYA8256PTU	825-896,9DB,6 ELEMENT,PL259	150	9	42 / 40	825-986	MYK1	PL259-PT	105.89	Call
MYA82512	825-896,11DB,12 ELEMENT YAGI	150	11	36 / 34	825-986	MYK1	N(F)	151.41	Call
MYA82512SO	824-896 MHz, 11 DBD, 12 ELEMENT	150	11	36 / 34	824-896	MYK1	SO239	148.26	Call
BMYA82512	824-896,11DB,12 ELE YAGI,BLK	150	11	36 / 34	824-896	MYK1	N(F)	189.08	Call
MYA8703	825-896,6DB,3 ELEMENT YAGI	150	6	72 / 57	825-986	MYK1	N(F)	71.78	Call
MYA8706	825-896,9DB,6 ELEMENT YAGI	150	9	42 / 40	825-986	MYK1	N(F)	95.39	Call
MYA8706ED	825-896,9DB,6 ELE,ENC DR ELE	150	9	42 / 40	825-986	MYK1	N(F)	164.69	Call
MYA87012	825-896,11DB,12 ELEMENT YAGI	150	11	36 / 34	825-986	MYK1	N(F)	151.41	Call
MYA9153	902-928,6DB,3 ELEMENT YAGI,CHR	150	6	72 / 57	902-928	MYK1	N(F)	71.78	Call
MYA9153RPC	902-928MHZ,6DBD,3 ELEMENT YAGI	150	6	72 / 57	902-928	MYK1	RPTNC(M)	94.47	Call
BMYA9303	896-970,6DB,3 ELE YAGI,BLK	150	6	72 / 57	896-970	MYK1	N(F)	86.03	Call
MYA9303	896-940,6DB,3 ELEMENT YAGI,CHR	150	6	72 / 57	896-940	MYK1	N(F)	71.78	Call
BMYA9306	896-970,9DB,6 ELE YAGI,BLK	150	9	42 / 40	896-970	MYK1	N(F)	113.12	Call
MYA9156	896-940,9DB,ELE YAGI,915MHZ,N	150	9	42 / 40	896-940	MYK1	N(F)	95.39	Call
MYA9156RPC	896-940,9DB,ELE YAGI,915, RPC	150	9	42 / 40	896-940	MYK1	RPTNC(M)	105.33	Call
MYA9159	902-928 MHz,10DB ALUMINUM YAGI	150	10	52 / 43	902-928	MYK1	N(F)	122.64	Call
MYA9306	896-970,9DB,6 ELEMENT YAGI,CHR	150	9	42 / 40	896-970	MYK1	N(F)	95.39	Call
MYA9306ED	896-940,9DB,6 ELEMENT,EDE,YAGI	150	9	42 / 40	896-940	MYK1	N(F)	164.06	Call
MYA9309	896-970,10DB,20DBF/B,YAGI	150	10	52 / 43	896-970	MYK1	N(F)	122.64	Call
BMYA93012	896-970,11DB,12 ELE YAGI,BLK	150	11	36 / 34	896-970	MYK1	N(F)	189.08	Call
MYA91512	896-940,12 ELE YAGI, N FEMALE	150	11	36 / 34	896-940	MYK1	N(F)	151.41	Call
MYA91512RPC	896-940,12 ELE YAGI, RP TNC	150	11	36 / 34	896-940	MYK1	RPTNC(M)	164.13	Call
MYA93012	896-970,12DB,12 ELEMENT YAGI	150	11	36 / 34	896-970	MYK1	N(F)	151.41	Call



BMYA9306

Antenex - YS Series - Silver Anodized, Non Welded, Economical Yagi * Each Antenna Tuned on Network Analyzer Wind Survivability: 100 MPH / VSWR 1.5:1 / Elements made from 6061-T6 3/8" Aluminum Tubing DC Grounded / 50 Ohm Impedance

YS7206	(Eng) 720-750 MHz 6 element silver	300	10.2	42 / 40	720-750	Included	N(F)	94.50	Call
YS7606	(Eng) 760-790 MHz 6 element silver	300	10.2	42 / 40	760-790	Included	N(F)	94.50	Call
YS8063	G - 806-896 6 DB 3 ELE SLV YAGI	300	6	72 / 57	806-896	Included	N(F)	73.50	Call
YS8066	G - 806-896MHz 9dB 6 Element Silver	300	9	42 / 40	806-896	Included	N(F)	94.50	Call
YS80612	806-896 11 DB 12 ELE SLV YAGI	300	11	36 / 34	806-896	Included	N(F)	162.00	Call
YS8963	896-970 6 DB 3 ELE SLV YAGI	300	6	72 / 57	896-970	Included	N(F)	73.50	Call
YS8966	896-970 9 DB 6 ELE SLV YAGI	300	9	42 / 40	896-970	Included	N(F)	94.50	Call
YS89612	896-970 11 DB 12 ELE SLV YAGI	300	11	36 / 34	896-970	Included	N(F)	162.00	Call



Panel Antennas (700, 800 & 900 MHz)

**Pctel / Maxrad - MP Flat Panel Series - Patent-pending printed circuit design* UV Stable Radome * Low Profile
PC Board Radiator/ 50 Impedance / Vertically Polarized / less than 1.5:1 VSWR / Wall/Corner or Pipe Mount included**

MP8066PTBN	806-866MHZ,6DBD PANEL,PT-BN	20	6	70	806-866	Included	BNC(M)	141.75	
MP8066PTC	806-866 MHz, 6DBD PANEL, PT-C	20	6	70	806-866	Included	TNC(M)	141.75	Call
MP8066PTMSMA	6 DBD,806-866 MHz PNL,PT-MSMA	20	6	70	806-866	Included	SMA(M)	141.75	Call
MP8066PTMSMARA	6 DBD, 806-866 MHz PN	20	6	70	806-866	Included	RTSMA(M)	141.75	Call
MP8066PT-NC	6DBD,806-866MHZ,PNL,PGTL,	20	6	70	806-866	Included	None	141.75	Call
MP8066PTNF	6 DBD,806-866MHZ PANEL PT-NF	20	6	70	806-866	Included	N(F)	141.75	Call
MP8066PTRPMSMA	806-866 MHz PANEL ANTENNA	20	6	70	806-866	Included	RPSMA(M)	141.75	Call
MP8066XFPTFSMA	806-960 MHz, 6DB PANEL ANTENNA,	20	6	70	806-960	Included	SMA(F)	188.99	Call
MP8066XFPTMSMA	806-960 MHz 6 DB PANEL ANTENNA	20	6	70	806-960	Included	SMA(M)	188.99	Call
MP8066XFPTNF	806-960 MHz 6 DBD XF PNL, NF	20	6	70	806-960	Included	N(F)	188.99	Call
MP8068NF	8 DBD, 806-960MHZ PANEL NF CONN.	20	8	60	806-960	Included	N(F)	183.75	Call
MP8068PTBN	8DBD,806-960MHZ,PANEL,PTBN	20	8	60	806-960	Included	BNC(M)	183.75	Call
MP8068PTC	8DBD, 806-960 MHz PANEL, PTC	20	8	60	806-960	Included	TNC(M)	183.75	Call
MP8068PTFSMA	8 DBD, 806 - 960 MHz PANEL, FSMA	20	8	60	806-960	Included	SMA(F)	183.75	Call
MP8068PTMSMA	8 DBD 806-960 MHz, PANEL PTMSMA	20	8	60	806-960	Included	SMA(M)	183.75	Call
MP8068PT-NC	8 DBD, 806-960 MHz, PANEL	20	8	60	806-960	Included	None	183.75	Call
MP8068PTNF	8 DBD,806-960MHZ,PANEL PTNF	20	8	60	806-960	Included	N(F)	183.75	Call
MP8068PTNM	8 dBd,806-960 MHz PANEL PTNM	20	8	60	806-960	Included	N(M)	183.75	Call



MP8066



Technical Equipment Distributors, Inc (TED)

Base Station Antennas – 700, 800 & 900 MHz

Panel Antennas (700, 800 & 900 MHz) (Continued)

Item#	Description & F/B Ratio	Max Power	Gain	Hor/ Vert. Beam Power @ 1/2 ('s)	Freq. Range	Mounting Hardware	Conn. Type	List Price	Resell Price
Pctel / Maxrad - MP Flat Panel Series (Continued)									
MP8246PTBN	6DBD, 824-896MHZ PANEL	20	6	70	824-896	Included	BNC(M)	141.75	Call
MP8246PTC	6 dBd,824-896 MHz PANEL,PT	20	6	70	824-896	Included	TNC(M)	141.75	Call
MP8246PTFSMA	6 dBd,824-896 MHz PANEL,PT	20	6	70	824-896	Included	SMA(F)	141.75	Call
MP8246PTMSMA	6 dBd,824-896 MHz PANEL,P	20	6	70	824-896	Included	SMA(M)	141.75	Call
MP8246PT-NC	MP8246PT-NC	20	6	70	824-896	Included	TNC(M)	141.75	Call
MP8246PTNF	6 DBD, 824-896MHZ PANEL	20	6	70	824-896	Included	N(F)	141.75	Call
MP8246PTNM	824-896 MHZ, 6DBD PANEL ANTENNA	20	6	70	824-896	Included	N(M)	141.75	Call
MP8906PTBN	6DBD, 890-960MHZ,PANEL,PTBN	20	5.4	90	890-960	Included	BNC(M)	141.75	Call
MP8906PTFSMA	6DBD,890-960MHz PANEL	20	5.4	90	890-960	Included	SMA(F)	141.75	Call
MP8906PTFSMARF	6 dBd,890-960 MHz,PT	20	5.4	90	890-960	Included	RPSMA(F)	141.75	Call
MP8906PTMSMA	6DBD, 890-960 MHz PANEL PT	20	5.4	90	890-960	Included	SMA(M)	141.75	Call
MP8906PT-NC	890-960MHz,6dBd PNL ANT,PGTL	20	5.4	90	890-960	Included	None	141.75	Call
MP8906PTNF	6DBD, 890-960MHZ PANEL PT-	20	5.4	90	890-960	Included	N(F)	141.75	Call
MP8906PTNM	6 DBD 890-960 MHz PANEL	20	5.4	90	890-960	Included	N(M)	141.75	Call
MP8906PTPL	890-960MHz,6dBd PNL ANT,PGTL	20	5.4	90	890-960	Included	MU(M)	141.75	Call
MP9026CPLXFPTFSMA	902-928 MHZ LHCP 6.4 DBIC XF PNL	20	6.4	65	902-928	Included	SMA(F)	179.99	Call
MP9026CPLXFPTMSMA	902-928 MHZ LHCP 6.4 DBIC PANEL	20	6.4	65	902-928	Included	SMA(M)	179.99	Call
MP9026CPLXFPTNF	902-928 MHZ LHCP 6.4DBIC XF PNL	20	6.4	65	902-928	Included	N(F)	179.99	Call
MP9026CPRXFPTFSMA	902-928 MHZ RHCP 6.4 DBIC XF FNL,	20	6.4	65	902-928	Included	SMA(F)	179.99	Call
MP9026CPRXFPTMSMA	902-928 MHZ RHCP 6.4 DBIC PANEL	20	6.4	65	902-928	Included	SMA(M)	179.99	Call
MP9026CPRXFPTNF	902-928 MHZ RHCP 6.4 DBIC XF PNL	20	6.4	65	902-928	Included	N(F)	179.99	Call
MP9027XFPTMSMA	902-928 MHZ PANEL ANTENNA	20	7	65	902-928	Included	SMA(M)	179.99	Call
MP9027XFPTNF	902-928 MHZ 7 DBD XF PNL,	20	7	65	902-928	Included	N(F)	179.99	Call
MP9159//RAMSMA	11 DBI, 902-928 MHZ PANEL PT	20	9	35	902-928	Included	RASMA(M)	183.75	Call
MP9159PTC	11 DBI 902-928 MHZ PANEL PTC	20	9	35	902-928	Included	TNC(M)	183.75	Call
MP9159PTFSMA	11 DBI, 902-928 MHZ PANEL PT	20	9	35	902-928	Included	SMA(F)	183.75	Call
MP9159PTMSMA	11 DBI 902-928 MHZ PANEL PT,	20	9	35	902-928	Included	SMA(M)	183.75	Call
MP9159PTNF	11 DBI, 902-928 MHZ PANEL	20	9	35	902-928	Included	N(F)	183.75	Call
MP9159PTNM	11 DBI, 902 - 928 MHZ PANEL	20	9	35	902-928	Included	N(M)	183.75	Call
Pacific Wireless "Rootenna" - RT Series - Designed to allow integration of the customers' radio equipment inside the weatherproof compartment.									
<i>50 Ohm Impedance / <1.5:1 VSWR / J45 Pass thru / V Protected Housing / LMR100 Lead Coax / Pipe Mount</i>									
RT9-12	12dBi 900MHz RooTenna Waterproof Compartment Antenna --No Pigtail	20	12	45	902-928	Pipe Mount	MMCX (M)	74.95	Call
RT9-12-MMCX	12dBi 900MHz RooTenna Waterproof Compartment Antenna -- 8" LMR100 pigtail	20	12	45	902-928	Pipe Mount	MMCX (M)	74.95	Call
RT9-12-RPMMCX	12dBi 900MHz RooTenna Waterproof Compartment Antenna -- 8" LMR100 pigtail	20	12	45	902-928	Pipe Mount	RPMMCX	74.95	Call
RT9-12-MCM	12dBi 900MHz RooTenna Waterproof Compartment Antenna -- 8" LMR100 pigtail	20	12	45	902-928	Pipe Mount	MC(M)	74.95	Call
RT9-12-RPSMAM	12dBi 900MHz RooTenna Waterproof Compartment Antenna --8" LMR100 pigtail	20	12	45	902-928	Pipe Mount	RPSMA (M)	74.95	Call
RT9-12-RPTNCM	12dBi 900MHz RooTenna Waterproof Compartment Antenna --8" LMR100 pigtail	20	12	45	902-928	Pipe Mount	RPTNC (M)	74.95	Call



MP9159PT





Technical Equipment Distributors, Inc (TEDI)

Base Station Antennas – 700, 800 & 900 MHz)

Panel Antennas (700, 800 & 900 MHz) (Continued)

Item#	Description & F/B Ratio	Max Powr	Gain	Hor/ Vert. Beam @ 1/2 Power (°s)	Freq. Range	Mounting Hardware	Conn. Type	List Price	Reseller Price
Cushcraft Flat Panel Series - Small Foot print * UV Stable Polycarbonate Radome * PC "Micro strip" Radiator <i>Impedance: 50 Ohm / VSWR: 1.5:1 / Linear or Circular Polarization</i>									
S8068P12NF	806-866 MHz, 8 dBi, Patch, 12" coax, N-Female	50	8	70	806-866	Not Incl	N(F)PT	136.33	Call
S8248P12NF	824-896 MHz, 8 dBi, Patch, 12" coax, N-Female	50	8	70	824-896	Not Incl	N(F)PT	136.00	Call
S828HVP12NF	824-896 MHz, 8 dBi, Dual Pol. Patch , Horiz./Vert.,	50	8	70	824-896	Not Incl	N(F)PT	232.88	Call
S828SLP12NF	824-896 MHz, 8 dBi, Dual Slant 45 deg. Pol. Patch,	50	8	70	824-896	Not Incl	N(F)PT	232.88	Call
S8658PC12NF	865-868 MHz, 8 dBi, Cir. Pol. Patch, 12" coax,	50	8	70	865-868	Not Incl	N(F)PT	149.98	Call
S8658WPC12NF	865-965 MHz, 8.5dBi, Cir. Pol. Patch, 12" coax,	50	8.5	70	865-868	Not Incl	N(F)PT	151.48	Call
S888P12NF	880-960 MHz, 8 dBi, Patch, 12" coax, N-Female	50	8	70	880-960	Not Incl	N(F)PT	136.33	Call
SQ8803P12NF	880-960 MHz, 3 dBi, OmniDirectional Patch, Plenum coax	50	3	360	880-960	Not Incl	N(F)PT	136.00	Call
S888HVP12NF	880-960 MHz, 8 dBi, Dual Pol. Patch , Horiz./Vert.,	50	8	70	880-960	Not Incl	N(F)PT	232.88	Call
S888SLP12NF	880-960 MHz, 8 dBi, Dual Slant 45 deg. Pol. Patch,	50	8	70	880-960	Not Incl	N(F)PT	232.88	Call
S9026P12NF	902-928 MHz, 6 dBi, Patch, 12" coax, N-Female	25	6	70	902-928	Not Incl	N(F)PT	118.07	Call
S9028P12NF	902-928 MHz, 8 dBi, Patch, 12" coax, N-Female	50	8	70	902-928	Not Incl	N(F)PT	136.33	Call
SQ9023P12NF	902-928 MHz, OmniDirectional Patch, 12" Plenum	50	3	360	902-928	Not Incl	N(F)PT	136.00	Call
S9028PC12NF	902-928 MHz, 8 dBi, Cir. Pol. Patch, 12" coax	50	8	70	902-928	Not Incl	N(F)PT	149.98	Call
S9028PCL12NF	902-928 MHz, 8 dBi, LH Cir. Pol. Patch, 12" coax	50	8	70	902-928	Not Incl	N(F)PT	80.02	Call
S9028PCR12NF	902-928 MHz, 8 dBi, RH Cir. Pol. Patch, 12" coax,	50	8	70	902-928	Not Incl	N(F)PT	80.02	Call
S9028HVP12NF	902-928 MHz, Patch, Horiz./Vert. Pol., 12" coax,	50	8	70	902-928	Not Incl	N(F)PT	232.88	Call
S9288PC12NF	928-960 MHz, 8 dBi, Cir. Pol. Patch, 12" coax,	50	8	70	928-960	Not Incl	N(F)PT	149.98	Call



S9026



S9028PC

Sector Antennas

Pacific Wireless - SA Series - Made from Heavy Duty Extruded Aluminum and Powder Coated * Super Heavy Duty Mounting system
Impedance: 50 Ohms / DC Grounded / Vercally or Horizontally Polarized (see Description) /

SAH9-120-12	12dBi 900MHz, 120 Deg HPOL Sector	100	12	120 / 15	900-928	Included	N(F)	599.95	Call
SA9-120-13	13dBi 900MHz, 120 Deg VPOL Sector	200	13	120 / 16	860-960	Included	N(F)	299.95	Call



Horizontally Polarized Sector (SAH9-120-12)



Vertically Polarized Sector (SA9-120-13)

Parabolic Antennas (Grid)

Pacific Wireless - GD Series - Heavy Duty and Die Cast Options * All Models come with LMR240 or LMR300 Pigtails
Great For Non-LOS Applications / Die Cast Models are Aluminum, Wire models are Powder Coated Steel
DC Grounded / 50 Ohm Impedance / Wind Survival: 125 MPH

HDGD9-15	HD Series 15dBi 900MHz Wire Grid Antenna, HD Mount System-	100	15	31 / 22	900-928	Included	N(F)	82.95	Call
GD9-15	15dBi 900MHz Wire Grid Antenna -	100	15	31 / 22	900-928	Included	N(F)	79.95	Call
HDGD9-DC15	HD Series 15dBi 900MHz Die Cast Antenna, HD Mount System-	100	15	31 / 22	900-928	Included	N(F)	87.95	Call
GD9-DC15	15dBi 900MHz Die Cast Antenna -	100	15	31 / 22	900-928	Included	N(F)	84.95	Call
GD9-18	18dBi 900MHz Grid Dish Parabolic --	100	18	16.5 / 16.5	900-928	Included	N(F)	369.95	Call
Pctel / Maxrad									
MCR806	806-870,8.5DB,CORNER REFLECTOR	100	8.5	45 / 56	806-896	Included	N(M)PT	299.00	Call
MCR806NF	806-870, 8.5DB, CORNER REFLECTOR	100	8.5	45 / 56	806-896	Included	N(M)PT	299.00	Call
MCR900	896-970,8.5DB,CORNER REFLECTOR	100	8.5	45 / 56	896-970	Included	N(M)PT	299.00	Call



©Pacific Wireless



©Pacific Wireless

GD9-18

